

Flanged Locking Slide Units

Aluminium

SPECIFICATION

Types

- Type **G**: With thread
- Type **R**: With indexing plunger
- Type **D**: With spring plunger

Aluminum

Powder coated

Black, RAL 9005, textured finish **SW**

Fastening elements / transfer elements

- Socket cap screws DIN 912
- Hex nuts DIN 985
- Centering bushings

Stainless steel AISI 304

Indexing plunger GN 717, type CK

- Plunger pin
Stainless steel AISI 303

- Knob
Plastic (Polyamide PA)
Black, matte finish

Spring plunger GN 615.9, type KN

- Stainless steel AISI 303
- With interal hex
- Stainless steel lock nut ISO 4035

INFORMATION

With flanged locking slide units GN 147.7, recurring positions along a square construction tube can be moved to easily and quickly. The required holes for type R or countersinks for type D can be created by the user according to the design instructions or ordered as completely finished construction tubes with locking holes GN 990.1 (see page).

For quick clamping without tools, the socket cap screws at the screw locations **z**, can be replaced by the adjustable hand levers GN 911 (see page 1874) listed in the table as accessories.

Centering bushings in the pass-through holes eliminate the axial play between the top and bottom parts of the locking slide units.

Flanged locking slide units GN 147.7 are delivered with unmounted indexing plunger (Type R) or spring plunger (Type D). Type G with thread is universally suitable for specific applications.

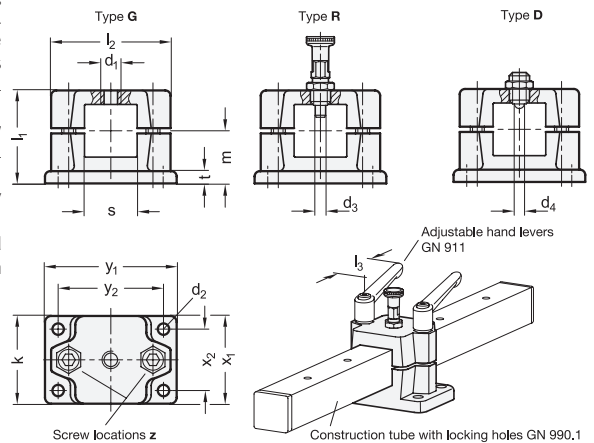


ACCESSORY

- Adjustable Hand Levers GN 911 (see page 1874)

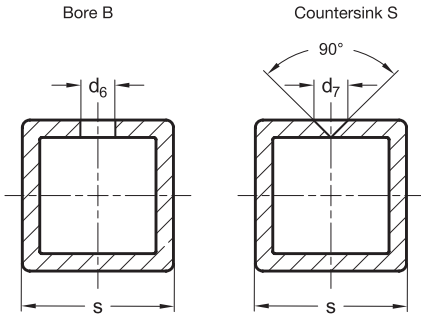
TECHNICAL INFORMATION

- Stainless Steel Characteristics (see page A26)



Description	s	d1	d2	d3 Pin -0.05 Bore +0.03/+0.08	d4	k Clamping length	l1	l2	m	t	x1	x2	y1	y2	z Screw locations	Accessory Recom. hand lever GN 911 for z l3	⚖️
GN 147.7-V25-D-SW	V 25	M 8	6.5	-	3.5	50	53	68	30	7	50	35	75	60	M8-35	78	261
GN 147.7-V25-G-SW	V 25	M 8	6.5	-	-	50	53	68	30	7	50	35	75	60	M8-35	78	261
GN 147.7-V25-R-SW	V 25	M 8	6.5	5	-	50	53	68	30	7	50	35	75	60	M8-35	78	261
GN 147.7-V30-D-SW	V 30	M 8	6.5	-	3.5	50	53	68	30	7	50	35	75	60	M8-35	78	245
GN 147.7-V30-G-SW	V 30	M 8	6.5	-	-	50	53	68	30	7	50	35	75	60	M8-35	78	245
GN 147.7-V30-R-SW	V 30	M 8	6.5	5	-	50	53	68	30	7	50	35	75	60	M8-35	78	245
GN 147.7-V40-D-SW	V 40	M 12	11	-	6.5	76	81.5	98	46.5	14	76	50	115	90	M10-60	92	732
GN 147.7-V40-G-SW	V 40	M 12	11	-	-	76	81.5	98	46.5	14	76	50	115	90	M10-60	92	732
GN 147.7-V40-R-SW	V 40	M 12	11	8	-	76	81.5	98	46.5	14	76	50	115	90	M10-60	92	732
GN 147.7-V50-D-SW	V 50	M 12	11	-	6.5	76	81.5	98	46.5	14	76	50	115	90	M10-60	92	699
GN 147.7-V50-G-SW	V 50	M 12	11	-	-	76	81.5	98	46.5	14	76	50	115	90	M10-60	92	699
GN 147.7-V50-R-SW	V 50	M 12	11	8	-	76	81.5	98	46.5	14	76	50	115	90	M10-60	92	699

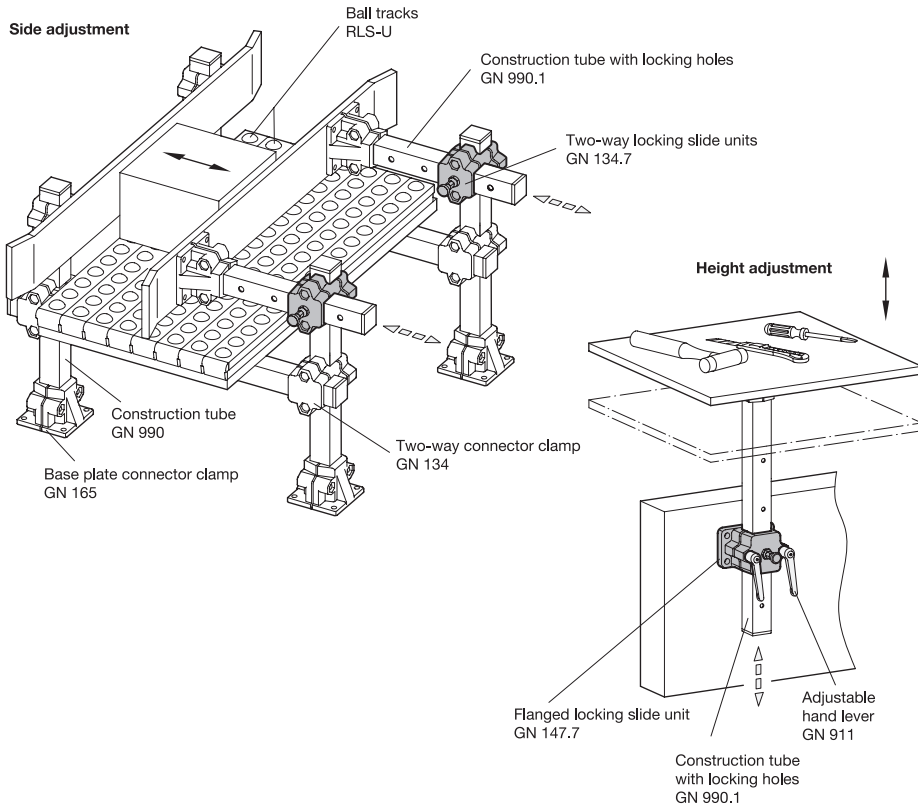
CONSTRUCTION INFORMATION



The square dimensions of the locking slide units are designed for construction tubes GN 990. These can be fitted with locking holes (B or S) by the user according to the dimensions specified in the table. Construction tubes with locking holes can be ordered as standard part GN 990.1. (see page) cut to length and completely ready for installation.

s Square	d ₆ + 0.3 Bore B (for type R)	d ₇ + 0.3 Countersink (for type D)	For locking slides
V 25	B 5	S 2.5	V 25
V 30	B 5	S 2.5	V 30
V 40	B 8	S 4.5	V 40
V 50	B 8	S 4.5	V 50

ASSEMBLY EXAMPLES



Linear motion components 20